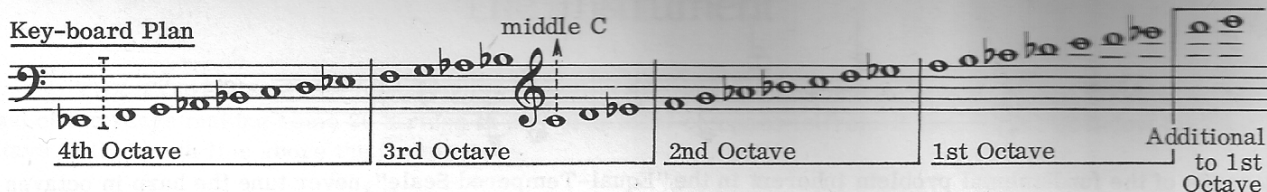


The following illustrations should prove a helpful reference until the key-board and key-change system are thoroughly understood.

### Key-board Plan



BLADES are named as  $E\flat(1)$ ,  $F\sharp(2)$ ,  $C\sharp(3)$  etc. according to their register. Key Settings or Accidentals are prepared by these indications.

Range of all possible keys: 13 Major; 5 Relative Minor.



(Harmonic Form - with raised seventh)

The various Blade positions when tuning in the full range of keys:

	E flat major and C minor	}	}	All Blades down B Blades up
	B flat major and G minor	}	}	A Blades up F Blades up
	F major and D minor	}	}	A and E Blades up C Blades up
	C major and A minor	}	}	A, E and B Blades up G Blades up
	G major and E minor	}	}	A, E, B (C major) and F Blades up F and D Blades up
	D major			A, E, B, F and C Blades up
	A major			A, E, B, F, C and G Blades up
	E major			A, E, B, F, C, G and D Blades up